

Recitation Worksheet Four

Name:

MyID:

Textbook:

Chemistry & Chemical Reactivity

by John C. Kotz, Paul M. Treichel, John R. Townsend, David Treichel

11th Edition | Copyright 2024

Instructions:

- This recitation worksheet covers Ch. 14.5-14.7, 18.1-18.3
- Please enter your first and last name as it appears on the eLC roster (do not use a nickname that is not reflected in eLC).
- Your UGA myID is a combination of letters and numbers (example: Dr. Abdelrahman's MyID is ema88805@uga.edu). **Do not use your 81x number.**
- Your completed worksheet has to be submitted to **Gradescope**. You have multiple options for submission:
 - You may use an app to annotate the worksheet by placing your answers in the answer boxes and showing your work when appropriate. Afterward, submit the worksheet to Gradescope. You will not need to upload anything to eLC.
 - You may print out the worksheet, write your answers in the answer boxes, and show your work on it when appropriate. Afterward, convert the worksheet to a PDF and submit to Gradescope. You will not need to upload anything to eLC.
 - If you do not have access to a printer, you may type your answers directly into the worksheet PDF and then submit it to Gradescope. Write your work on separate sheets of paper, convert them to a PDF, and upload to the appropriate dropbox on eLC.
 - There is a Gradescope app available for both iOS and Android devices that allows you to scan and submit your printed work, or you can submit your fillable PDF directly.
- The following criteria **must** be met to be eligible for full credit:
 - You must make sure the pages are in the correct order and have the same layout as the original worksheet when submitting to Gradescope regardless of your submission type.
 - Answers must be written in the corresponding answer boxes.
 - You must show your work when appropriate.
- This worksheet is due no later than **12:00 PM (noon) on the Saturday, September 21st.**
- A periodic table and formula sheet are attached to the end of this worksheet. Please keep these attached to your worksheet in the correct order when submitting to Gradescope.

1. For a reversible reaction $A + B \rightleftharpoons C + D$, the enthalpy change of the forward reaction is -41 kJ/mol and the activation energy for the forward reaction is 64 kJ/mol. What is the activation energy in kJ/mol for the reverse reaction?

kJ/mol

2. Which of the following statements about catalysts is **FALSE**:

- A. Catalysts do not appear in the balanced equation.
- B. Catalysts reduce the activation energy for a reaction.
- C. Biological catalysts are called enzymes.
- D. Catalysts do not alter the mechanism of the reaction and never appear in the rate law.
- E. Since catalysts are recycled, even a small amount of catalyst can accelerate a reaction.

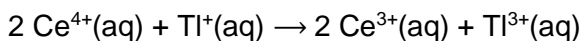
3. The rate law for the reaction $2 XY + Z_2 \rightarrow 2 XYZ$ can be written as $\text{rate} = k [XY] [Z_2]$. Which choice could possibly represent the mechanism for this reaction?

- A. Step 1: $Z_2 \rightarrow Z + Z$ (slow)
Step 2: $XY + Z \rightarrow XYZ$ (fast)
Step 3: $XY + Z \rightarrow XYZ$ (fast)
- B. Step 1: $XY + Z_2 \rightarrow XYZ + Z$ (slow)
Step 2: $XY + Z \rightarrow XYZ$ (fast)
- C. Step 1: $XY + Z_2 \rightarrow XYZ_2$ (slow)
Step 2: $XYZ_2 \rightarrow XYZ + Z$ (fast)
- D. Step 1: $2 XY \rightleftharpoons X_2Y_2$ (fast)
Step 2: $X_2Y_2 + Z_2 \rightarrow 2 XYZ$ (slow)
- E. Not enough information is provided to predict the mechanism of this reaction.

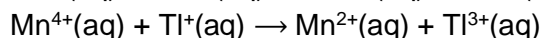
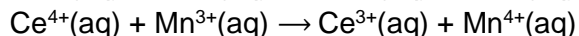
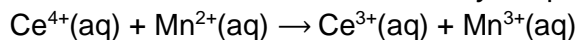
4. For the first-order reaction $\text{N}_2\text{O}_5(\text{g}) \rightarrow 2 \text{NO}_2(\text{g}) + \frac{1}{2} \text{O}_2(\text{g})$. If $t_{1/2} = 22.5 \text{ h}$ at 20.0°C and 1.50 h at 40.0°C , calculate the activation energy in kJ/mol of this reaction.

kJ/mol

5. The *uncatalyzed* reaction between $\text{Ce}^{4+}(\text{aq})$ and $\text{Ti}^+(\text{aq})$ is very slow and occurs in a single elementary step given by



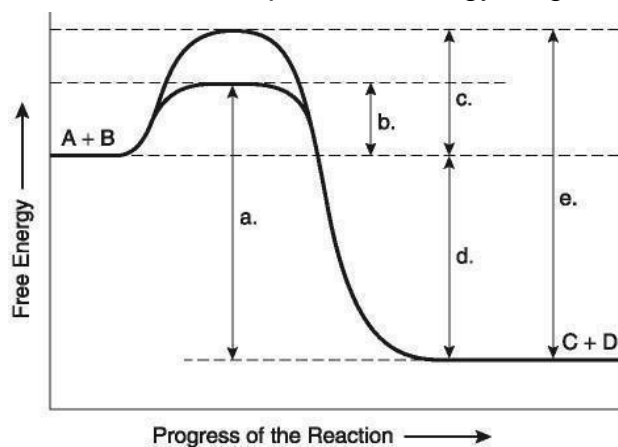
Mn^{2+} can be utilized as a catalyst to increase the rate of this reaction. The *catalyzed* reaction is a three-step mechanism provided below. The overall rate law for the *catalyzed* process is $\text{rate} = k [\text{Ce}^{4+}][\text{Mn}^{2+}]$.



Which statements regarding the *uncatalyzed* and *catalyzed* reactions between $\text{Ce}^{4+}(\text{aq})$ and $\text{Ti}^+(\text{aq})$ are **TRUE**? Select all that apply.

- A. The rate law of the *uncatalyzed* reaction is $\text{rate} = k[\text{Ce}^{4+}][\text{Ti}^+]$.
- B. The *uncatalyzed* single elementary step reaction is slow because the probability of a three-particle collision is low.
- C. From the mechanism of the *catalyzed* process, Mn^{3+} is an intermediate.
- D. From the mechanism of the *catalyzed* process, the second step is the slow rate determining step.

6. For reaction $A + B \rightarrow C + D$, see the potential energy diagram below to answer the questions:



A. Which letter shows the change in energy for the overall reaction?

B. Which letter shows the activation energy without a catalyst?

C. Which letter shows the activation energy with a catalyst?

7. Determine the activation energy in kJ/mol for the reaction using the information in the table:

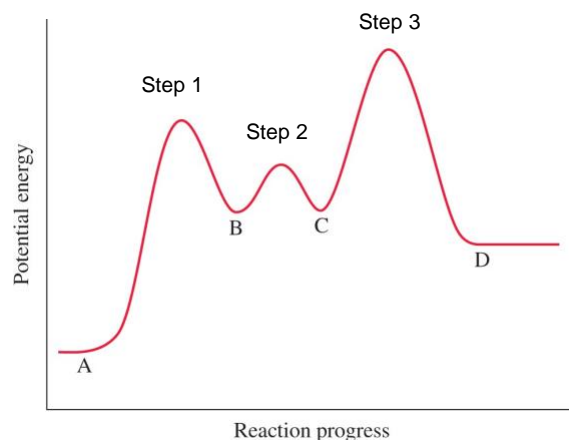
Temperature ($^{\circ}\text{C}$)	Rate Constant ($\text{M}^{-1}\text{s}^{-1}$)
330	0.98
550	1.60

kJ/mol

8. Using the potential energy diagram to the right, answer the following questions:

- A. What are the intermediates in the reaction? Insert letters without spaces in the answer box, example **ABCD**.

- B. How many transition states are there? Insert a number, example 1, 2, 3, etc.



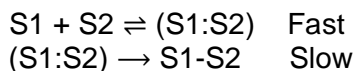
- C. Which step has the largest rate constant? Insert a number, example 1, 2, 3, etc.

- D. Which step has the smallest rate constant? Insert a number, example 1, 2, 3, etc.

- E. Is step 1 of the reaction exothermic or endothermic?

- F. Is the overall reaction exothermic or endothermic?

9. A mechanism has been proposed for the formation of a double helix DNA is given by:



If S1 and S2 represent strand 1 and strand 2 respectively, which of the statements are **TRUE**? Select all that apply. Insert letters without spaces in the answer box, example **ABCD**.

- A. (S1:S2) represent the reaction intermediate in the mechanism.
- B. The rate for the formation of the DNA strand can be written as $\text{rate} = k [\text{S1}][\text{S2}]$.
- C. The rate for the formation of the DNA strand can be written as $\text{rate} = k [(\text{S1+S2})]$.
- D. The second step in the mechanism is the rate determining step.
- E. The activation energy of the fast first step is higher and therefore it has a lower rate constant compared to the second slow step.

10. Which of the following statements regarding the rates of chemical reactions is **TRUE**?

- A. Reaction rates can be calculated only from collision frequency
- B. The addition of a catalyst to a reaction can increase the rate of the reaction only if the temperature of the reaction increases
- C. Reaction rates increase with temperature because a fraction of reactant molecules have higher kinetic energies compared to activation energy
- D. $E_a < \Delta H < 0$ conditions can exist for a chemical reaction

11. In which of the following reactions will result in an increase in entropy? Select all that apply. Insert letters without spaces in the answer box, example **ABCD**.

- A. $\text{CaO(s)} + \text{H}_2\text{O(l)} \rightarrow \text{Ca(OH)}_2\text{(s)}$
- B. $\text{Si(s)} + 2 \text{Cl}_2\text{(g)} \rightarrow \text{SiCl}_4\text{(g)}$
- C. $\text{CuSO}_4 \cdot 3 \text{H}_2\text{O(s)} + 2 \text{H}_2\text{O(g)} \rightarrow \text{CuSO}_4 \cdot 5 \text{H}_2\text{O(s)}$
- D. $\text{C}_6\text{H}_6\text{(l)} + \frac{15}{2} \text{O}_2\text{(g)} \rightarrow 6 \text{CO}_2\text{(g)} + 3 \text{H}_2\text{O(g)}$
- E. $\text{H}_2\text{S(g)} + \text{O}_2\text{(g)} \rightarrow \text{H}_2\text{O(g)} + \text{SO}_2\text{(g)}$ (not balanced)
- F. $\text{CCl}_4\text{(l)} \rightarrow \text{CCl}_4\text{(g)}$
- G. $2 \text{HgO(s)} \rightarrow 2 \text{Hg(l)} + \text{O}_2\text{(g)}$

12. Calculate the entropy change in the surroundings that occur when 35.0 g of acetone (molar mass = 58.08 g/mol) condenses at its normal boiling point (56.1 °C). ΔH_{vap} of acetone is 29.1 kJ/mol.

J/K

13. Determine the boiling point for iron in °C from the given information: $\Delta H_{\text{vap}} = 349.6$ kJ/mol and $\Delta S_{\text{vap}} = 111.55$ J/(mol·K).

°C

14. Which of the following has the substance with the greater entropy listed first? Select all that apply. Insert letters without spaces in the answer box, example **ABCD**.

A. 1 mol Br₂(l) at 1 atm and 8 °C and 1 mol Br₂(s) at 1 atm and –8 °C
B. 10.0 mol of Na(s) at 1 atm and 5 °C and 100.0 g of Na(s) at 1 atm and 5 °C
C. MgS at 1 atm and 25 °C and KBr at 1 atm and 25 °C
D. 0.284 mol O₂ at 15.0 bar and 22.3 °C and 0.312 mol SO₂ at 0.110 bar and 32.5 °C

15. Which of the following has the highest standard molar entropy?

A. N₂F₄(g)
B. N₂H₄(g)
C. NO(g)
D. NH₄CO₂NH₂(s)
E. NH₄OH(aq)

16. Which of the following statements is **true** regarding the **second law** of thermodynamics? Select all that apply. Insert letters without spaces in the answer box, example **ABCD**.

- A. $\Delta S_{\text{sys}} + \Delta S_{\text{surr}} > 0$ for any spontaneous process
- B. $\Delta S_{\text{sys}} = -\Delta S_{\text{surr}}$ for a reversible process
- C. The entropy of a perfect crystal at absolute zero (0 K) is zero
- D. The energy of the universe is conserved in any process
- E. All the above of the statements are true

17. Which of the following processes are spontaneous or non-spontaneous? Insert (S) for spontaneous and (NS) for non-spontaneous.

A. Splitting of water into hydrogen gas and oxygen gas

B. Dissolving table salt (NaCl) in water

C. Ripening of a banana

D. Vaporization of $\text{Br}_2(\text{l})$ at $60.0\text{ }^\circ\text{C}$ (boiling point of $\text{Br}_2(\text{l}) = 58.8\text{ }^\circ\text{C}$)

E. Combustion of natural gas (natural gas is a mixture of methane and ethane)

F. Driving a car up the hill

18. Without doing any calculations, determine whether the standard entropy change, ΔS° is positive or negative for each of the following reactions.

reaction 1: $\text{C}(\text{graphite}) + \text{O}_2(\text{g}) \rightarrow \text{CO}_2(\text{g})$

reaction 2: $2\text{CO}(\text{g}) + \text{O}_2(\text{g}) \rightarrow 2\text{CO}_2(\text{g})$

- A. ΔS° is positive for both reactions.
- B. ΔS° is positive for reaction 1 but negative for reaction 2.
- C. ΔS° is positive for reaction 2 but negative for reaction 1.
- D. ΔS° is negative for both reactions.

Extra Practice Questions: these questions will not be graded

1. A factor that decreases the activation energy for a reaction:

- I) decreases the rate constant
- II) increases the rate constant
- III) has no effect on the rate constant
- IV) increases the product yield
- V) might be a catalyst

- A. I and IV
- B. II and IV
- C. I, IV, and V
- D. IV and III
- E. II and V

2. A catalyst:

- I) lowers activation energy
- II) provides an alternate reaction pathway
- III) is consumed in the reaction and therefore does not appear in the chemical equation of each mechanism
- IV) speeds a reaction
- V) is heterogeneous if it is in a different phase than the reactants

- A. I, III, and IV
- B. I, IV, and V
- C. II, III, and IV
- D. II and IV
- E. I, II, IV, and V

3. Activation energy is:

- A. energy at the bottom of the reaction curve
- B. the heat energy in joules required to break the bonds in one reactant
- C. an energy that a catalyst brings to the system to activate one of the reactants
- D. the kinetic energy of solution stirring that brings the reaction to start
- E. minimum kinetic energy that molecules must bring to their collisions for a chemical reaction to occur

4. The entropy of gaseous _____ is the largest at 25 °C and 1 atm.

- A. C_2H_2
- B. H_2
- C. C_2H_6
- D. CH_4
- E. C_2H_2

5. For a process to be at equilibrium, it is necessary that

☐

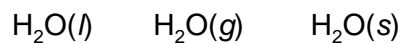
A. $\Delta S_{\text{sys}} = \Delta S_{\text{surr}}$.

B. $\Delta S_{\text{sys}} = -\Delta S_{\text{surr}}$.

C. $\Delta S_{\text{sys}} = 0$.

D. $\Delta S_{\text{sys}} = 0$ and $\Delta S_{\text{surr}} = 0$.

6. Place the following in order of **decreasing** standard molar entropy.

☐

A. $\text{H}_2\text{O}(g) > \text{H}_2\text{O}(l) > \text{H}_2\text{O}(s)$

B. $\text{H}_2\text{O}(s) > \text{H}_2\text{O}(l) > \text{H}_2\text{O}(g)$

C. $\text{H}_2\text{O}(g) > \text{H}_2\text{O}(s) > \text{H}_2\text{O}(l)$

D. $\text{H}_2\text{O}(l) > \text{H}_2\text{O}(s) > \text{H}_2\text{O}(g)$

E. $\text{H}_2\text{O}(s) > \text{H}_2\text{O}(g) > \text{H}_2\text{O}(l)$

Formula Sheet

Length

1 kilometer = 0.62137 mile
1 inch = 2.54 centimeters (exactly)
1 Ångstrom = 1×10^{-10} meter

Energy

1 joule = $1 \text{ kg} \cdot \text{m}^2 / \text{s}^2$
1 calorie = 4.184 joules
1 Calorie = 1 kilocalorie = 1000 calories
1 L·atm = 101.325 joules

Pressure

1 pascal = $1 \text{ N} / \text{m}^2 = 1 \text{ kg} / \text{m} \cdot \text{s}^2$
1 atmosphere = 101.325 kilopascals = 760 mm Hg = 760 torr = 14.70 lb/in²
1 bar = 1×10^5 Pa (exactly)

Temperature

0 K = -273.15°C
K = °C + 273.15
°C = (5/9)(°F - 32)

Mass

1 kg = 2.205 lbs

Volume

1 mL = $1 \text{ cm}^3 = 1 \text{ cc}$

Constants

$c = 2.998 \times 10^8 \text{ m/sec}$
 $h = 6.626 \times 10^{-34} \text{ J} \cdot \text{sec}^{-1}$
 $R = 0.08206 \text{ L} \cdot \text{atm} / \text{mol} \cdot \text{K} = 8.314 \text{ J} / \text{mol} \cdot \text{K}$
Specific heat of water = 4.184 J/g·K
Mass of an electron: $9.109 \times 10^{-31} \text{ kg}$
Mass of a proton: $1.673 \times 10^{-27} \text{ kg}$
 $RH = 2.18 \times 10^{-18} \text{ J}$
Specific heat of water = 4.184 J/g·K
STP = 273.15 K and 1 atm
Avogadro's number: 6.022×10^{23}

Equations

$d \text{ (density)} = m/V$
 $P_1 V_1 = P_2 V_2$
 $V_1/T_1 = V_2/T_2$
 $P_1 V_1/n_1 T_1 = P_2 V_2/n_2 T_2$
 $PV = nRT$
 $(P + a(n^2/V^2)) \cdot (V - nb) = nRT$
molar mass (M) = mRT/PV
density (d) = MP/RT
 $x_A = n_A/n_{\text{tot}} = P_A/P_{\text{tot}} = V_A/V_{\text{tot}}$
 $P_{\text{tot}} = P_A + P_B + \dots$
 $n_{\text{tot}} = n_A + n_B + \dots$
$$\mu_{rms} = \sqrt{\frac{3RT}{M}}$$

$$\frac{\text{Rate of effusion A}}{\text{Rate of effusion B}} = \sqrt{\frac{MW_B}{MW_A}}$$

$$Q = C \times \Delta T = c_{\text{specific}} \times m \times \Delta T$$

$$Q = n \times \Delta H \text{ (kJ/mol)} = m \times \Delta H \text{ (kJ/g)}$$

$$w = -P\Delta V$$

$$\Delta E = q + w$$

$$\Delta H^\circ = \sum n\Delta H_f^\circ(\text{products}) - \sum n\Delta H_f^\circ(\text{reactants})$$

$$\Delta H^\circ = \sum n\Delta H^\circ(\text{bonds broken}) - \sum n\Delta H^\circ(\text{bonds formed})$$

$$E = h\nu$$

$$c = \lambda\nu$$

$$\lambda = h/mv$$

$$\Delta E = -2.18 \times 10^{-18} J \left(\frac{1}{n_f^2} - \frac{1}{n_i^2} \right)$$

$$\ln \left(\frac{P_2}{P_1} \right) = \frac{\Delta H_{vap}}{R} \left(\frac{1}{T_1} - \frac{1}{T_2} \right)$$

$$C_g = kP_g$$

$$P_{\text{solution}} = P_{\text{solvent}} X_{\text{solvent}}$$

$$P_{\text{solution}} = \sum P_j = \sum P_j X_j$$

$$\Delta T_b = K_b m_i$$

$$\Delta T_f = K_f m_i$$

$$\pi = MRTi$$

Thermodynamic and Electrochemistry

$$S = k_b \times \ln(W)$$

$$k_b = 1.381 \times 10^{-23} \text{ J/K}$$

$$\Delta S = q_{\text{rev}}/T$$

$$\Delta S_{\text{surr}} = q_{\text{surr}}/T = -q_{\text{rev}}/T$$

$$\Delta S_{\text{univ}} = \Delta S_{\text{sys}} + \Delta S_{\text{surr}}$$

$$\Delta S^\circ_{\text{rxn}} = \sum \nu S^\circ_{\text{products}} - \sum \nu S^\circ_{\text{reactants}}$$

$$\Delta H^\circ_{\text{rxn}} = \sum \nu H^\circ_{\text{products}} - \sum \nu H^\circ_{\text{reactants}}$$

$$\Delta G^\circ_{\text{rxn}} = \sum \nu G^\circ_{\text{products}} - \sum \nu G^\circ_{\text{reactants}}$$

$$\Delta G = \Delta H - T\Delta S$$

$$\Delta G = \Delta G^\circ + RT \cdot \ln Q$$

$$R = 8.314 \text{ J/mol.K}$$

$$\Delta G^\circ = -RT \cdot \ln K$$

$$\Delta G = -nFE_{\text{cell}}$$

$$F = 96485 \text{ J/(V}\cdot\text{mol e}^-)$$

$$E^\circ_{\text{cell}} = RT/nF \ln K$$

$$E^\circ_{\text{cell}} = (0.0257/n) \ln K = (0.0592/n) \log K$$

$$E_{\text{cell}} = E^\circ_{\text{cell}} - (RT/nF) \ln Q$$

$$E_{\text{cell}} = E^\circ_{\text{cell}} - (0.0257/n) \ln Q$$

$$\text{Electrolysis: } Q \text{ (total charge)} = I \times t = n \times F$$

Integrated Rate Laws & half-life

$$\ln \frac{[A]}{[A]_0} = -kt$$

$$\frac{1}{[A]} = kt + \frac{1}{[A]_0}$$

$$[A] = -kt + [A]_0$$

$$t_{1/2} = \frac{[A]_0}{2k}$$

$$t_{1/2} = \frac{\ln 2}{k} = \frac{0.693}{k}$$

$$t_{1/2} = \frac{1}{k[A]_0}$$

$$\ln \frac{k_2}{k_1} = -\frac{E_a}{R} \left(\frac{1}{T_2} - \frac{1}{T_1} \right)$$

Equilibrium and Acid / Base

$$K_p = K_c \times (RT)^{\Delta n}$$

$$\text{pH} = -\log[\text{H}_3\text{O}^+]$$

$$K_w = 1.0 \times 10^{-14} \text{ at } 25^\circ\text{C}$$

$$K_w = [\text{H}_3\text{O}^+] \times [\text{OH}^-]$$

$$K_w = K_a \times K_b$$

$$\text{p}K_a = -\log[K_a]$$

$$\text{Buffer: pH} = \text{p}K_a + \log \frac{[\text{A}^-]}{[\text{HA}]}$$

$$\ln \frac{K_2}{K_1} = \frac{\Delta H_{rxn}^\circ}{R} \left(\frac{1}{T_1} - \frac{1}{T_2} \right)$$

Periodic Table of the Elements

1																		18																															
1 H																		2 He																															
1.01																		4.00																															
2																																																	
3 Li		4 Be																5 B		6 C																													
6.94		9.01																10.81		12.01																													
																		14.01		16.00																													
11 Na		12 Mg																13 Al		14 Si		15 P		16 S		17 Cl		18 Ar																					
22.99		24.31																26.98		28.09		30.97		32.06		35.45		39.95																					
3		4																5		6		7		8		9		10		11		12																	
19 K		20 Ca																21 Sc		22 Ti		23 V		24 Cr		25 Mn		26 Fe		27 Co		28 Ni		29 Cu		30 Zn		31 Ga		32 Ge		33 As		34 Se		35 Br		36 Kr	
39.10		40.08																44.96		47.87		50.94		52.00		54.94		55.85		58.93		58.69		63.55		65.38		69.72		72.63		74.92		78.97		79.90		83.80	
37 Rb		38 Sr																39 Y		40 Zr		41 Nb		42 Mo		43 Tc		44 Ru		45 Rh		46 Pd		47 Ag		48 Cd		49 In		50 Sn		51 Sb		52 Te		53 I		54 Xe	
85.47		87.62																88.91		91.22		92.91		95.95		[97]		101.07		102.91		106.42		107.87		112.41		114.82		118.71		121.76		127.60		126.90		131.29	
37 Cs		56 Ba																																81 Tl		82 Pb													
132.91		137.33		204.38		207.2																																											
				208.98		[209]																																											
87 Fr		88 Ra		104 Rf		105 Db		106 Sg		107 Bh		108 Hs		109 Mt		110 Ds		111 Rg		112 Cn		113 Nh		114 Fl		115 Mc		116 Lv		117 Ts		118 Og																	
[223]		[226]		[267]		[268]		[269]		[270]		[269]		[277]		[281]		[282]		[285]		[286]		[290]		[293]		[294]		[294]																			
																		85 At		86 Rn																													
																		[210]		[222]																													
57 La		58 Ce		59 Pr		60 Nd		61 Pm		62 Sm		63 Eu		64 Gd		65 Tb		66 Dy		67 Ho		68 Er		69 Tm		70 Yb		71 Lu																					
138.91		140.12		140.91		144.24		[145]		150.36		151.96		157.25		158.93		162.50		164.93		167.26		168.93		173.05		174.97																					
89 Ac		90 Th		91 Pa		92 U		93 Np		94 Pu		95 Am		96 Cm		97 Bk		98 Cf		99 Es		100 Fm		101 Md		102 No		103 Lr																					
[227]		232.04		231.04		238.03		[237]		[244]		[243]		[247]		[247]		[251]		[252]		[257]		[258]		[259]		[262]																					